



Follow Us:



<https://www.moreroomstone.com>

<https://mn.moreroomslab.com>



MOREROOM
· STONE ·

Beyond Arts Fashion

Guangdong Mono Home Co., Ltd
广东蒙诺家居材料有限公司

Marketing Center: A3 Building, Foshan Meili Xintiandi, No.168 Jihua West Road,
Foshan City, Guangdong Province, China

营销中心：佛山市禅城区南庄镇季华西路168号佛山美里新天地项目西区A3座

COLLECTION

MOREROOM • MORE NATURE MORE POSSIBILITIES

Beyond Arts Fashion

M O R E R O O M



We Just Happen To
Make Great Sintered Stone



MOREROOM
·STONE·

Beyond Arts Fashion



Beyond
Arts
Fashion

We Just Happen To
Make Great Sintered Stone

Brand Introduction

品牌简介

MOREROOM · MORE NATURE MORE POSSIBILITIES
意式 | 自然 | 美学

蒙诺石材岩板 (MOREROOM STONE) · 拥有 16000+ 平方的超流量艺术红馆总部 · 位于中国陶都中心 - 佛山瓷海国际中心 · 蒙诺石材岩板 · 一个具有成熟的国际研发设计运营系统的高端石材岩板品牌 · 本质上是一家与国际顶级设计研发公司联合的石材岩板应用解决方案服务商 · 从产品研发、生产、加工、安装 · 蒙诺始终保持着近乎苛刻的标准 · 在每个环节皆可提供柔性化的定制服务。

蒙诺石材岩板 (MOREROOM STONE) · 2012 年成立伊始 · 即立志以大设计系统驱动品牌向国际化方向发展 · 在研发设计方面 · 与 NEWTON、Digital Design、Nitida 等众多的意大利一流设计机构达成战略合作 · 同时和意大利罗马尼集团携手合作中国设计研发中心 · 建立长期稳定的伙伴关系 · 从而同步意大利产品美学系统与逻辑 · 为消费者与设计师提供纯粹的意式自然美学石材岩板。

蒙诺石材岩板 (MOREROOM STONE) 在设备和产品原料方面 · 与德国司马、意大利 AirPower、西班牙陶丽西等顶尖设备制造商及色釉料企业保持着长期深度的合作关系 · 力求将全球最前沿的产品设计、最先进的技术工艺、当代意式美学空间体验和国际营销服务体系 · 带给全球高端消费者。

MOREROOM STONE, with over 16,000 square meters of natural stone and sintered stone industry landmark - ART-S RED HALL, is located in the heart of the Chinese Ceramics Industry Foshan Ceramics International Center. MOREROOM STONE is a high-end natural stone and sintered stone brand, with a mature international research, development, design, and operational system. Essentially, it serves as a provider of natural stone and sintered stone one-stop solutions, collaborating with top-tier international design and development companies. From R&D, production, fabrication process, and installation, MOREROOM STONE keeps pace with the highest standards of the Italian and Spanish industries and can provide flexible brand customization services in every process.

MOREROOM STONE, since established in 2012, has been determined to be driven by the "GRAND DESIGN SYSTEM" (Integrated design, space and graphic design, product system design system), to the global market. In R & D, we have strategically partnered with top-notch Italian design institutions such as NEWTON, Digital Design, and Nitida and forged a stable long-term cooperation with Romani Group (Italy), establishing a Chinese R&D center together. Through the cooperation, to synchronize the Italian product aesthetic system and design logic, we provide the natural stone and sintered stone with authentic Italian natural aesthetics to consumers and designers.

MOREROOM STONE cooperates with the best raw materials suppliers and the top equipment ink and glaze manufacturers such as ZSCHIMMER & SCHWARZ (Germany), AIRPOWER (Italy), and TORRECID (Spain), etc., and strive to integrate the top product design, the most advanced technology and contemporary Italian aesthetic space experience, and brings the global marketing service system to high-end consumers around the world.

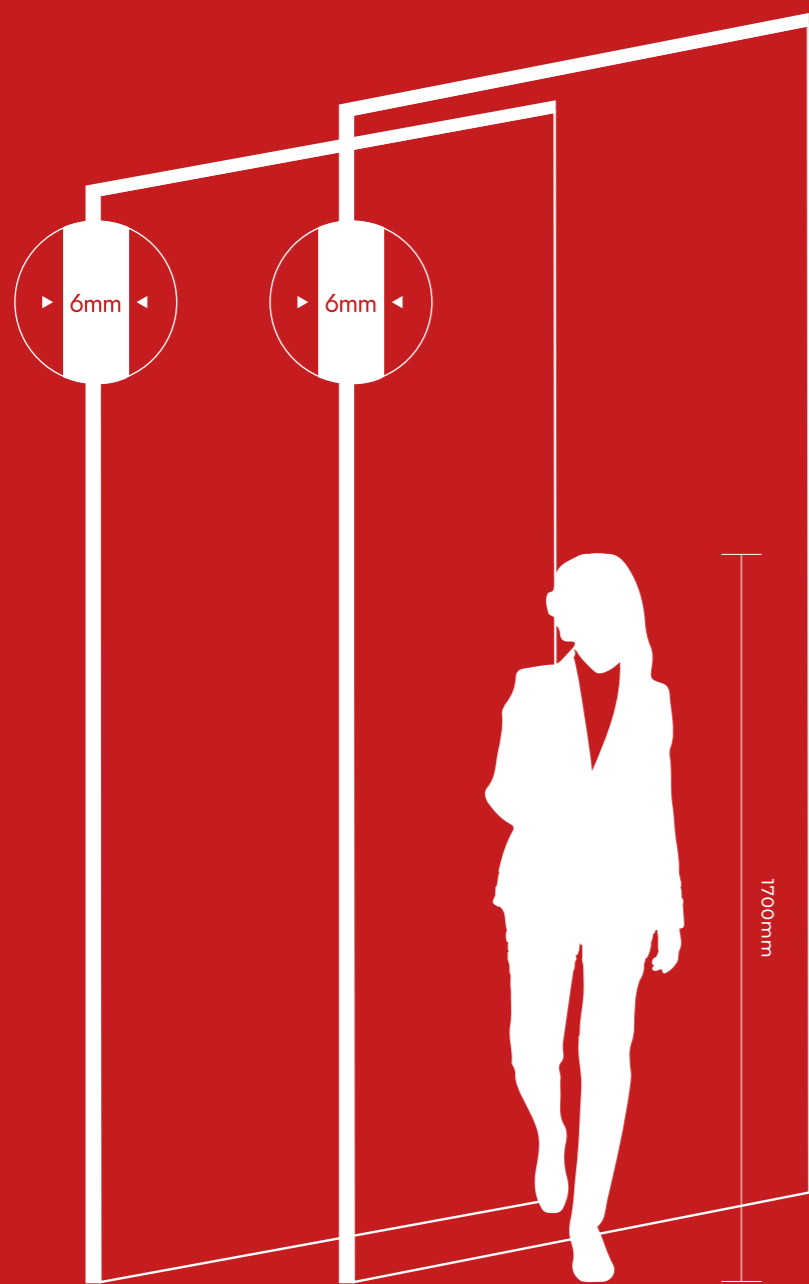


MOREROOM
·STONE·

Beyond Arts Fashion

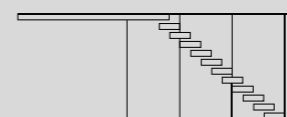
1200×2700×6mm
(108"×48"×1/4")

2,800×1,200×6mm
(110"×48"×1/4")



SINTERED STONE SIZES

APPLICABLE SCENE



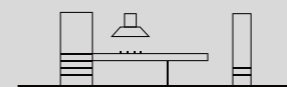
STAIRCASE 楼梯



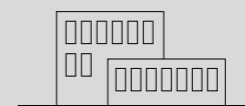
INTERIOR&DESIGN 室内装饰



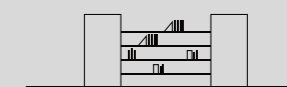
CURVED SURFACES 热弯



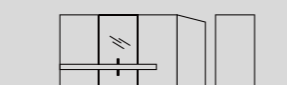
KITCHENE 厨房



VENTILATED FACADE 通风立面



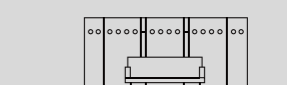
SHELVES CONSOLE 书架衣柜



TOPS&BATHROOMS 浴室



WALL&FLOOR 墙地



BACKLIGHT 背景墙

WHITE STONE

白石系列

● Size:
2,700x1,200x6mm (108"x48"1/4")

MORE NATURE
MORE POSSIBILITIES



- 琥珀鱼肚白 / CALACATTA BIANCO
- MN011AP271206 MN011AY271206
- 干粒亮抛 / Nanotech Polished/Shiny
钻粉干粒 / Matt (Diamondglass)
- 2700×1200×6mm



- 网纹雪花白 / STATUARIO WHITE
- MN019AP271206 MN019AY271206
- 干粒亮抛 / Nanotech Polished/Shiny
钻粉干粒 / Matt (Diamondglass)
- 2700×1200×6mm

WHITE STONE

白石系列

● Size:
2,700x1,200x6mm (108"x48"1/4")

MORE NATURE
MORE POSSIBILITIES



- 细纹雪花白 / STATUARIO ORO
- MN022AP271206 MN022AY271206
- 干粒亮抛 / Nanotech Polished/Shiny
钻粉干粒 / Matt (Diamondglass)
- 2700×1200×6mm



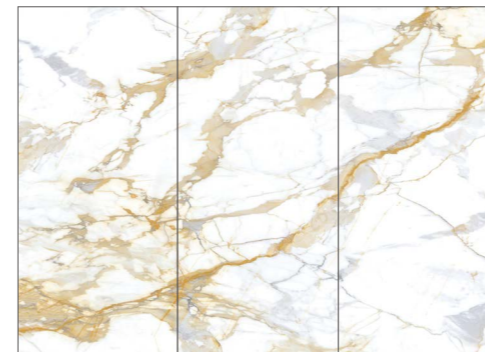
- 雅顿金 / CALACATTA ROYAL
- MN039AP271206 MN039AY271206
- 干粒亮抛 / Nanotech Polished/Shiny
钻粉干粒 / Matt (Diamondglass)
- 2700×1200×6mm



- 鱼肚白 / CALACATTA WHITE
- MN012AP271206 MN012AY271206
- 干粒亮抛 / Nanotech Polished/Shiny
钻粉干粒 / Matt (Diamondglass)
- 2700×1200×6mm



- 雅士白 / ARISTON WHITE
- MN062AP271206 MN062AY271206
- 干粒亮抛 / Nanotech Polished/Shiny
钻粉干粒 / Matt (Diamondglass)
- 2700×1200×6mm



- 卡拉卡塔金 / CALACATTA GOLD
- MN034AP271206 MN034AY271206
- 干粒亮抛 / Nanotech Polished/Shiny
钻粉干粒 / Matt (Diamondglass)
- 2700×1200×6mm



- 熊猫白 / PANDA WHITE
- MN072AP271206
- 干粒亮抛 / Nanotech Polished/Shiny
- 2700×1200×6mm



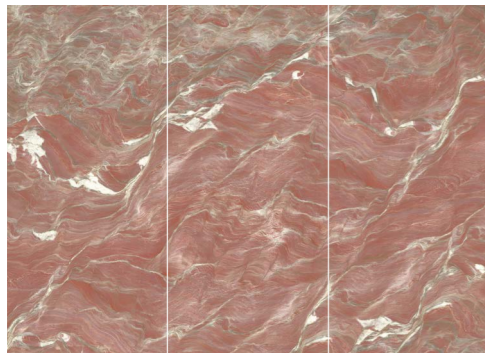
- 意大利星白 / DOLOMITE
- MN067AP271206
- 干粒亮抛 / Nanotech Polished/Shiny
- 2700×1200×6mm

LUXURY STONE

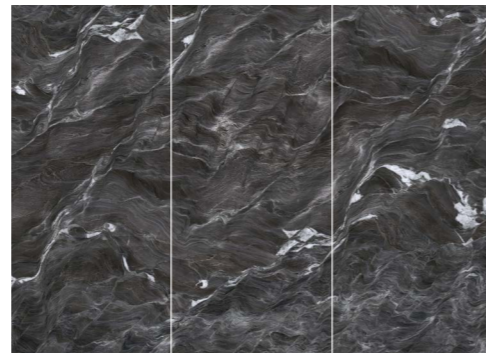
奢石系列

● Size:
2,700x1,200x6mm (108"x48"1/4")

MORE NATURE
MORE POSSIBILITIES



- 红袖添香 / RED MANSIONS
- MN626BP271206
- 干粒亮抛 / Nanotech Polished/Shiny
- 2700×1200×6mm



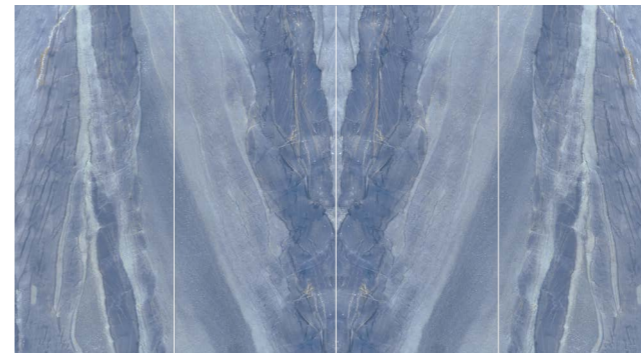
- 丝绸之路 / SILK ROAD
- MN726CP271206
- 干粒亮抛 / Nanotech Polished/Shiny
- 2700×1200×6mm

LUXURY STONE

奢石系列

● Size:
2,700x1,200x6mm (108"x48"1/4")

MORE NATURE
MORE POSSIBILITIES



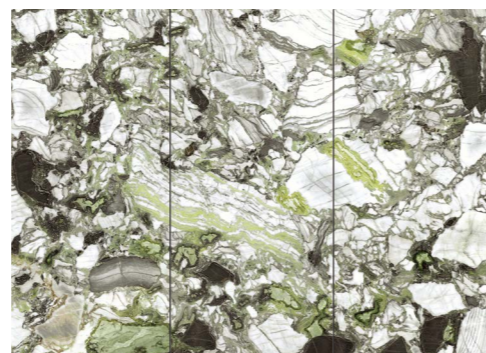
- 格兰云天 / AZUL MACAUBAS
- MN413BP271206
- 干粒亮抛 / Nanotech Polished/Shiny
- 2700×1200×6mm



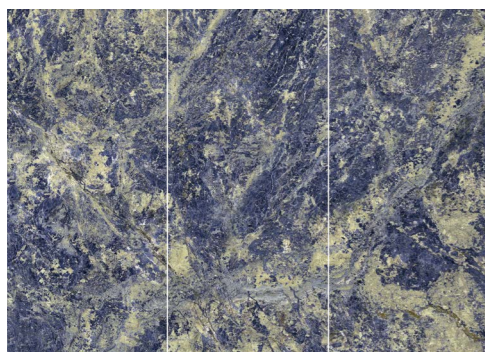
- 阿姬曼 / TAJ MAHAL
- MN178AK127806
- 金丝绒 / Velvet
- 2780×1200×6mm



- 雪山银狐 / FROZEN FOX
- MN627BP271206
- 干粒亮抛 / Nanotech Polished/Shiny
- 2700×1200×6mm



- 冷翡翠 / FREEZING EMERALD
- MN662CP271206
- 干粒亮抛 / Nanotech Polished/Shiny
- 2700×1200×6mm



- 玻利维亚蓝 / BOLIVIA BLUE
- MN411BP271206
- 干粒亮抛 / Nanotech Polished/Shiny
- 2700×1200×6mm



- 蓝金沙 / PALISSANDRO BLUE
- MN431BP271206
- 干粒亮抛 / Nanotech Polished/Shiny
- 2700×1200×6mm

ONYX
玉石系列

● Size:
2,700x1,200x6mm (108"x48"1/4")

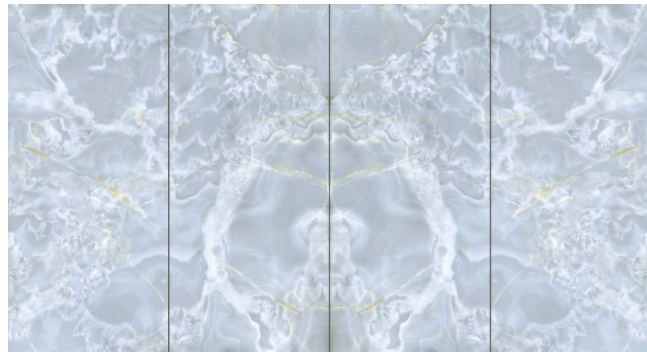
MORE NATURE
MORE POSSIBILITIES



- 金线白玉 / SNOW WHITE
- MN044AP271206
- 干粒亮抛 / Nanotech Polished/Shiny
- 2700×1200×6mm



- 罗马玉 / ROMAN ONYX
- MN113AP271206
- 干粒亮抛 / Nanotech Polished/Shiny
- 2700×1200×6mm



- 蓝玉 / BLUE ONYX
- MN433BP271206
- 干粒亮抛 / Nanotech Polished/Shiny
- 2700×1200×6mm



- 山水白玉 / POETIC WHITE
- MN041AP271206
- 干粒亮抛 / Nanotech Polished/Shiny
- 2700×1200×6mm

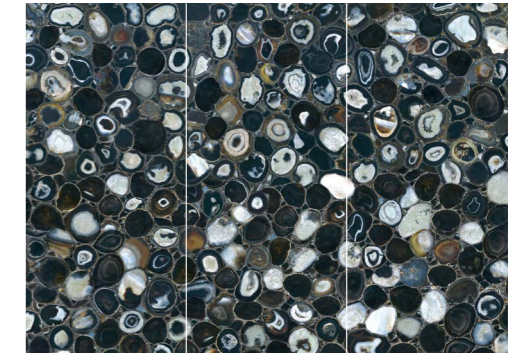
GEM
宝石系列

● Size:
2,700x1,200x6mm (108"x48"1/4")

MORE NATURE
MORE POSSIBILITIES



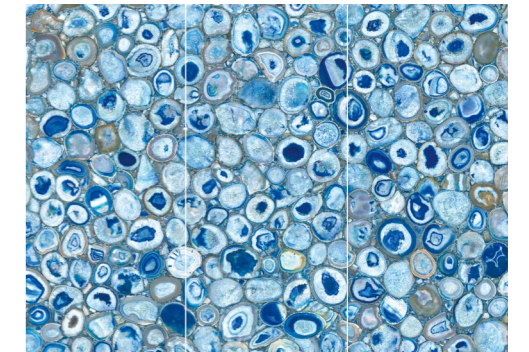
- 白水晶 / CRYSTAL WHITE
- MN043AP271206
- 干粒亮抛 / Nanotech Polished/Shiny
- 2700×1200×6mm



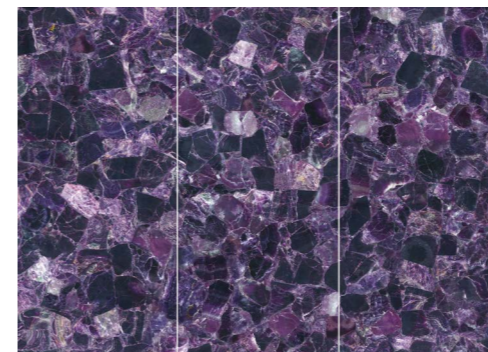
- 黑玛瑙 / BLACK AGATE
- MN778CP271206
- 干粒亮抛 / Nanotech Polished/Shiny
- 2700×1200×6mm



- 粉红水晶 / ROSA CRYSTAL
- MN668CP271206
- 干粒亮抛 / Nanotech Polished/Shiny
- 2700×1200×6mm



- 蓝玛瑙 / BLUE AGATE
- MN441CP271206
- 干粒亮抛 / Nanotech Polished/Shiny
- 2700×1200×6mm



- 紫萤石 / FLUORITE
- MN694CP271206
- 干粒亮抛 / Nanotech Polished/Shiny
- 2700×1200×6mm

MARBLE

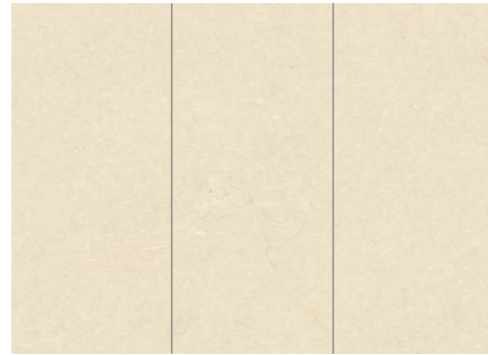
大理石系列

● Size:
2,700x1,200x6mm (108"x48"1/4")

MORE NATURE
MORE POSSIBILITIES



- 白玉兰 / MAGNOLIASA EXTRA
- MN114AP271206
- 干粒亮抛 / Nanotech Polished/Shiny
- 2700×1200×6mm



- 西米 / CREMA MARFIL EXTRA
- MN119AP271206
- 干粒亮抛 / Nanotech Polished/Shiny
- 2700×1200×6mm

MARBLE

大理石系列

● Size:
2,700x1,200x6mm (108"x48"1/4")

MORE NATURE
MORE POSSIBILITIES



- 白木纹 / SERPEGGIANTE WHITE
- MN068AP271206
- 干粒亮抛 / Nanotech Polished/Shiny
- 2700×1200×6mm



- 古堡灰 / PLATINUM LEICA
- MN226AP271206 MN226AY271206
- 干粒亮抛 / Nanotech Polished/Shiny
- 钻粉干粒 / Matt (Diamondglass)
- 2700×1200×6mm



- 拿铁 / LATTE
- MN133AP271206
- 干粒亮抛 / Nanotech Polished/Shiny
- 2700×1200×6mm



- 米白洞 / TRAVERTINO CLASSICO
- MN131AP271206
- 干粒亮抛 / Nanotech Polished/Shiny
- 2700×1200×6mm



- 梵高灰 / VAN GOGH GREY
- MN262AP271206 MN262AY271206
- 干粒亮抛 / Nanotech Polished/Shiny
- 钻粉干粒 / Matt (Diamondglass)
- 2700×1200×6mm



- 俄罗斯灰 / IRON GREY
- MN227AP271206 MN227AY271206
- 干粒亮抛 / Nanotech Polished/Shiny
- 钻粉干粒 / Matt (Diamondglass)
- 2700×1200×6mm



- 闪电灰 / AMBER GREY
- MN276AP271206
- 干粒亮抛 / Nanotech Polished/Shiny
- 2700×1200×6mm



- 拿铁灰 / LATTE ASH
- MN278AP271206
- 干粒亮抛 / Nanotech Polished/Shiny
- 2700×1200×6mm



- 云多拉灰 / PIETRA GREY
- MN277AP271206
- 干粒亮抛 / Nanotech Polished/Shiny
- 2700×1200×6mm



- 古灶灰 / GRAPHITE GREY
- MN228AP271206 MN228AY271206
- 干粒亮抛 / Nanotech Polished/Shiny
- 钻粉干粒 / Matt (Diamondglass)
- 2700×1200×6mm

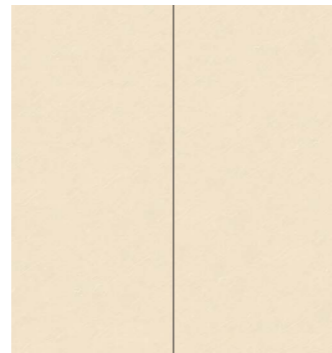
MARBLE
大理石系列

● Size:
2,700x1,200x6mm (108"x48"1/4")

MORE NATURE
MORE POSSIBILITIES



- 佛罗伦萨 / FLORENTINES ASH
- MN311CP271206 MN311CY271206
- 干粒亮抛 / Nanotech Polished/Shiny
钻粉干粒 / Matt (Diamondglass)
- 2700×1200×6mm



- 白砂糖莎安娜 / MIRAGE BEIGE
- MN144AP271206
- 干粒亮抛 / Nanotech Polished/Shiny
- 2700×1200×6mm

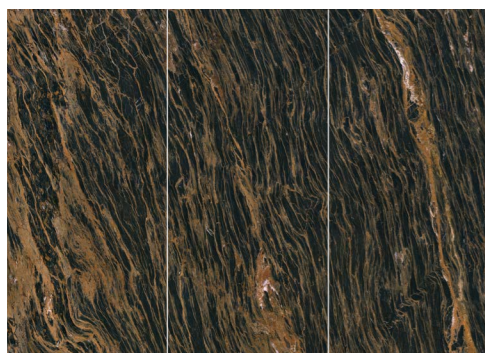
MARBLE
大理石系列

● Size:
2,700x1,200x6mm (108"x48"1/4")

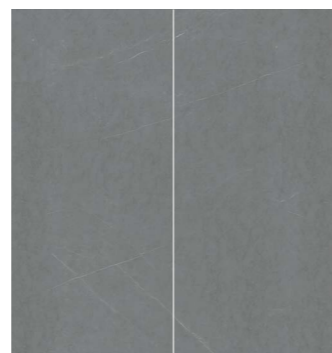
MORE NATURE
MORE POSSIBILITIES



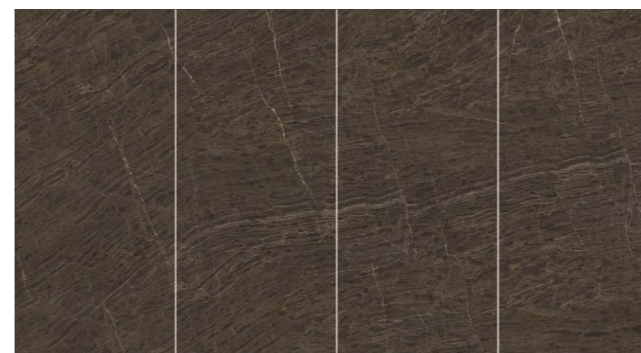
- 威尼斯棕 / FRAPPUCCINO
- MN319CP271206
- 干粒亮抛 / Nanotech Polished/Shiny
- 2700×1200×6mm



- 黑金木纹 / PERSIAN PORTORO
- MN727CP271206
- 干粒亮抛 / Nanotech Polished/Shiny
- 2700×1200×6mm



- 保加利亚灰中灰 / BULGARIA MEDIUM GREY
- MN287CP271206 MN287CY271206
- 干粒亮抛 / Nanotech Polished/Shiny
钻粉干粒 / Matt (Diamondglass)
- 2700×1200×6mm



- 欧网 / MONDOTTE
- MN331CP271206
- 干粒亮抛 / Nanotech Polished/Shiny
- 2700×1200×6mm



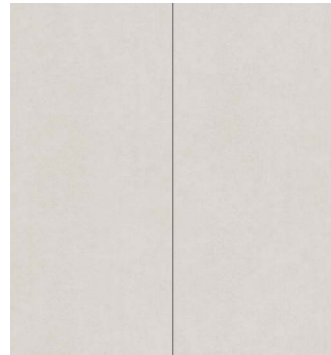
- 星耀黑 / GALAXY BLACK
- MN728CP271206 MN728CY271206
- 干粒亮抛 / Nanotech Polished/Shiny
钻粉干粒 + 数码微雕 / Matt (Diamondglass) + Polishing Carving Ink
- 2700×1200×6mm

ESSENCE

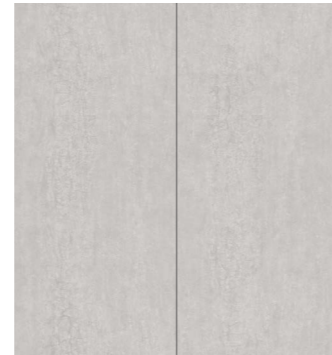
现代质感系列

● Size:
2,700x1,200x6mm (108"x48"1/4")

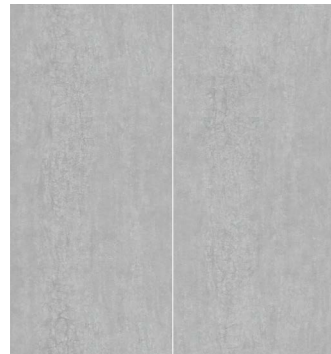
MORE NATURE
MORE POSSIBILITIES



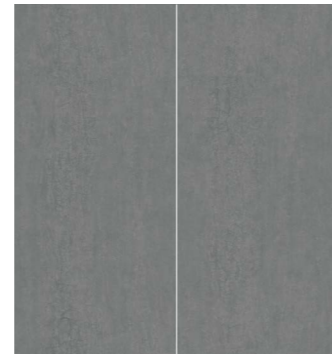
• 森蒂米灰 / SANDY GREY CREAM
• MN266AY271206
• 钻粉干粒 / Matt (Diamondglass)
• 2700×1200×6mm



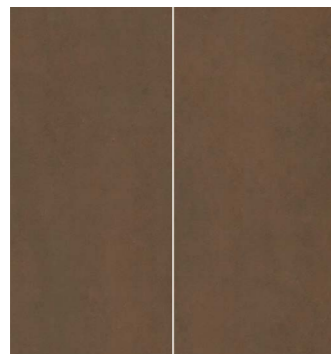
• 森蒂浅灰 / SANDY GREY LIGHT
• MN267AY271206
• 钻粉干粒 / Matt (Diamondglass)
• 2700×1200×6mm



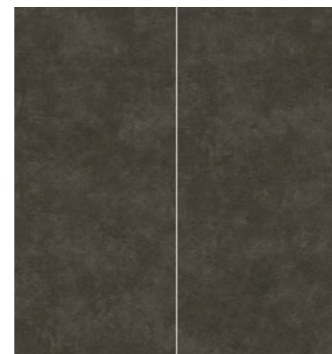
• 森蒂中灰 / SANDY GREY MED
• MN268AY271206
• 钻粉干粒 / Matt (Diamondglass)
• 2700×1200×6mm



• 森蒂深灰 / SANDY GREY DARK
• MN272AY271206
• 钻粉干粒 / Matt (Diamondglass)
• 2700×1200×6mm



• 红锈石 / CORTEN
• MN676CY271206
• 钻粉干粒 / Matt (Diamondglass)
• 2700×1200×6mm



• 黑锈石 / IRON COPPER
• MN762CY271206
• 钻粉干粒 + 数码微雕
Matt (Diamondglass) + Polishing Carving Ink
• 2700×1200×6mm

MONO SWATCH

纯色系列

● Size:
2,700x1,200x6mm (108"x48"1/4")
2,800x1,200x6mm (110"x48"1/4")

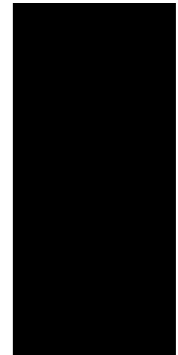
MORE NATURE
MORE POSSIBILITIES



• 纯白 / PURE WHITE
• MN078AP271206 MN078AY271206
MN078AY281206
• 干粒亮抛 / Nanotech Polished/Shiny
钻粉干粒 / Matt (Diamondglass)
• 2700×1200×6mm 2800×1200×6mm



• 纯灰 / PURE GREY
• MN231BP271206 MN231BY271206
MN231BY281206
• 干粒亮抛 / Nanotech Polished/Shiny
钻粉干粒 / Matt (Diamondglass)
• 2700×1200×6mm 2800×1200×6mm



• 纯黑 / PURE BLACK
• MN772CP271206 MN772CY271206
MN772CY281206
• 干粒亮抛 / Nanotech Polished/Shiny
钻粉干粒 / Matt (Diamondglass)
• 2700×1200×6mm 2800×1200×6mm



• 奶油色 / BLANCO
• MNXN28153
• 细腻面 / Smooth
• 2800×1200×6mm



• 卡其浅灰 / CAMEL
• MNXN28035
• 细腻面 / Smooth
• 2800×1200×6mm



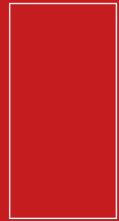
• 卡其棕 / CASTAGNA
• MNXN28039
• 细腻面 / Smooth
• 2800×1200×6mm



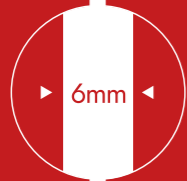
• 珊瑚红 / AMARANTO
• MNXN28037
• 细腻面 / Smooth
• 2800×1200×6mm



• 森林绿 / MUSCHIO
• MNXN28050
• 细腻面 / Smooth
• 2800×1200×6mm



1600×3200×6mm
(126"×63"×1/4")



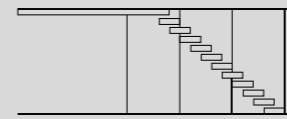
6mm



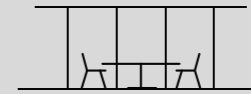
1700mm

SINTERED STONE SIZES

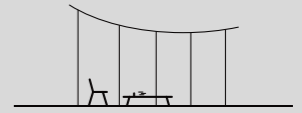
APPLICABLE SCENE



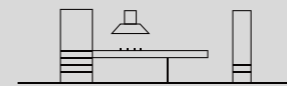
STAIRCASE 楼梯



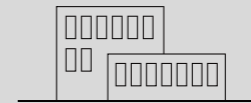
INTERIOR&DESIGN 室内装饰



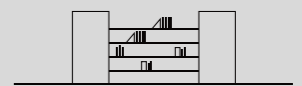
CURVED SURFACES 热弯



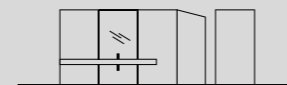
KITCHENE 厨房



VENTILATED FACADE 通风立面



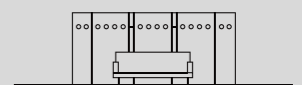
SHELVES CONSOLE 书架衣柜



TOPS&BATHROOMS 浴室



WALL&FLOOR 墙地



BACKLIGHT 背景墙

WHITE STONE

白石系列

● Size:
3,200x1,600x6mm (126"x63" x1/4")

MORE NATURE
MORE POSSIBILITIES



- 琥珀鱼肚白 / CALACATTA BIANCO
- MN011AP321606
- 干粒亮抛 / Nanotech Polished/Shiny
- 3200×1600×6mm



- 鱼肚白 / CALACATTA WHITE
- MN012AP321606
- 干粒亮抛 / Nanotech Polished/Shiny
- 3200×1600×6mm

WHITE STONE

白石系列

● Size:
3,200x1,600x6mm (126"x63" x1/4")

MORE NATURE
MORE POSSIBILITIES



- 熊猫白 / PANDA WHITE
- MN072APG321606
- 结晶干粒亮抛 / Nanotech Polished + Glint
- 3200×1600×6mm



- 北极星 (雪花白) / POLARIS (STATUARIO)
- MN082AP321606
- 干粒亮抛 / Nanotech Polished/Shiny
- 3200×1600×6mm



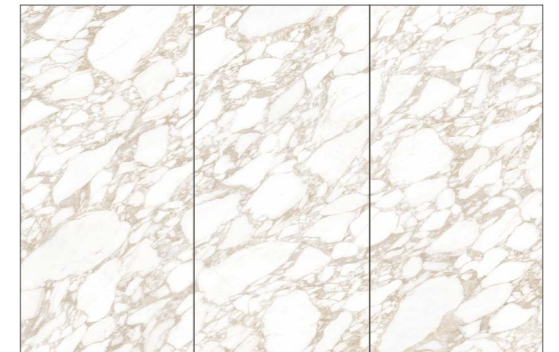
- 卡拉卡塔金 / CALACATTA GOLD
- MN034AR321606
- 干粒柔抛 (真石光) / Silk
- 3200×1600×6mm



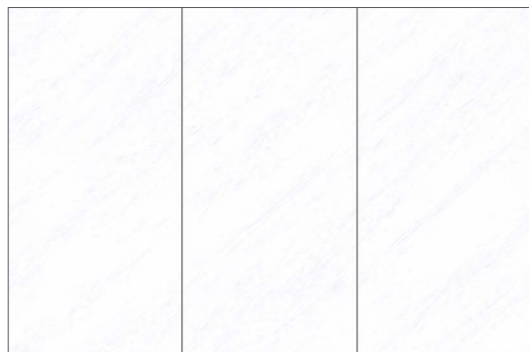
- 网纹雪花白 / STATUARIO WHITE
- MN019AR321606
- 干粒柔抛 (真石光) / Silk
- 3200×1600×6mm



- 宝格丽白 / BULGARI WHITE
- MN076AP321606
- 干粒亮抛 / Nanotech Polished/Shiny
- 3200×1600×6mm



- 卡地亚金 / CARTIER GOLD
- MN077AR321606
- 干粒柔抛 (真石光) / Silk
- 3200×1600×6mm



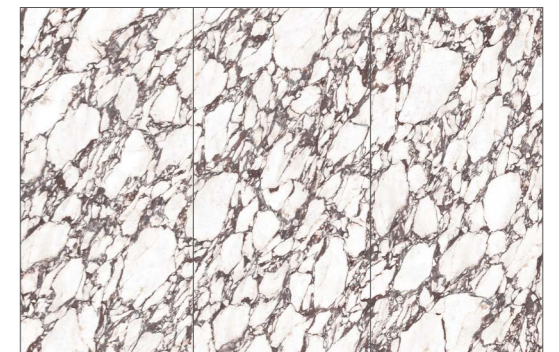
- 雅士白 / ARISTON WHITE
- MN062AR321606
- 干粒柔抛 (真石光) / Silk
- 3200×1600×6mm



- 意大利星白 / DOLOMIT
- MN067AR321606
- 干粒柔抛 (真石光) / Silk
- 3200×1600×6mm



- 宝格丽 - 铃兰白 / BULGARI - CALACATTA CLASSICO
- MN122AP321606
- 干粒亮抛 / Nanotech Polished/Shiny
- 3200×1600×6mm



- 宝格丽 - 典雅紫 / BULGARI - CALACATTA VIOLA
- MN126AP321606
- 干粒亮抛 / Nanotech Polished/Shiny
- 3200×1600×6mm

LUXURY STONE
奢石系列

● Size:
3,200x1,600x6mm (126"x63" x1/4")

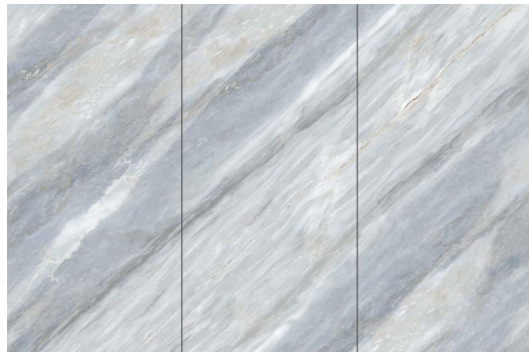
MORE NATURE
MORE POSSIBILITIES



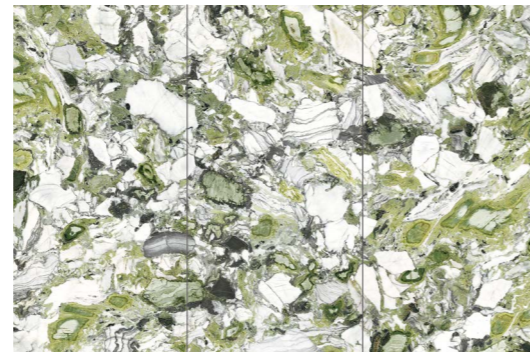
• 孔雀开屏 / PULM BLOSSOM
• MN291AP321606
• 干粒亮抛 / Nanotech Polished/Shiny
• 3200×1600×6mm



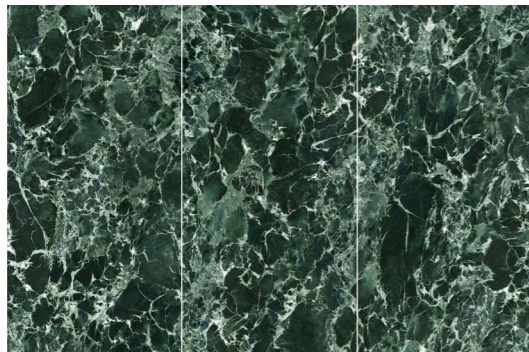
• 鱼肚灰 / SUPER WHITE
• MN293AR321606
• 干粒柔抛 (真石光) / Silk
• 3200×1600×6mm



• 蓝金沙 / PALISSANDRO BLUE
• MN431BPG321606
• 结晶干粒亮抛 / Nanotech Polished + Glint
• 3200×1600×6mm



• 冷翡翠 / FREEZING EMERALD
• MN662CP321606
• 干粒亮抛 / Nanotech Polished/Shiny
• 3200×1600×6mm



• 普拉达绿 / PRADA GREEN
• MN686CP321606
• 干粒亮抛 / Nanotech Polished/Shiny
• 3200×1600×6mm

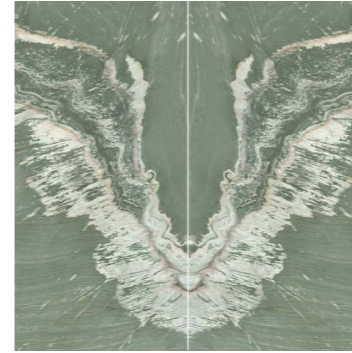


• 亚马逊绿 / AMAZON GREEN
• MN688CP321606
• 干粒亮抛 / Nanotech Polished/Shiny
• 3200×1600×6mm

LUXURY STONE
奢石系列

● Size:
3,200x1,600x6mm (126"x63" x1/4")

MORE NATURE
MORE POSSIBILITIES



• 凌云翼 / VERDE MAESTRO
• MN619CP321606
• 干粒亮抛 / Nanotech Polished/Shiny
• 3200×1600×6mm



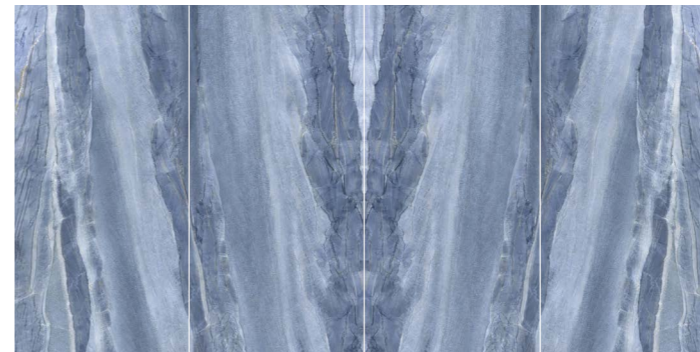
• 新潘多拉 / PATAGONIA
• MN813BP321606
• 干粒亮抛 / Nanotech Polished/Shiny
• 3200×1600×6mm



• 皇家翡翠 / ROYAL EMERALD
• MN691CP321606
• 干粒亮抛 / Nanotech Polished/Shiny
• 3200×1600×6mm



• 拿破仑黑 / NAPOLEON BLACK
• MN766CP321606
• 干粒亮抛 / Nanotech Polished/Shiny
• 3200×1600×6mm



• 格兰云天 / AZUL MACAUBAS
• MN413BPG321606
• 结晶干粒亮抛 / Nanotech Polished + Glint
• 3200×1600×6mm

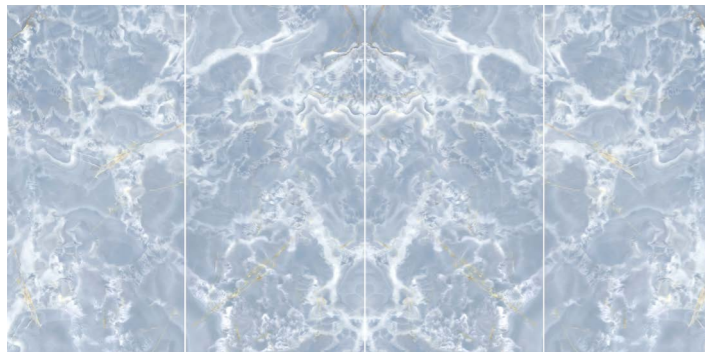
ONYX

玉石系列

● Size:
3,200x1,600x6mm (126"x63" x1/4")



- 金线白玉 / SNOW WHITE
- MN044AP321606
- 干粒亮抛 / Nanotech Polished/Shiny
- 3200×1600×6mm



- 蓝玉 / BLUE ONYX
- MN433BP321606
- 干粒亮抛 / Nanotech Polished/Shiny
- 3200×1600×6mm

MORE NATURE
MORE POSSIBILITIES

GEM

宝石系列

● Size:
3,200x1,600x6mm (126"x63" x1/4")



- 粉红水晶 / ROSA CRYSTAL
- MN668CP321606
- 干粒亮抛 / Nanotech Polished/Shiny
- 3200×1600×6mm

MORE NATURE
MORE POSSIBILITIES

MARBLE
大理石系列

● Size:
3,200x1,600x6mm (126"x63" x1/4")

MORE NATURE
MORE POSSIBILITIES



- 罗马洞石 / ROMAN TRAVERTINE
- MN141BR321606 MN141BFJ321606
- 干粒柔抛 (真石光) / Silk
钻粉干粒 + 数码微雕 / Matt (Diamondglass) + Polishing Carving Ink
- 3200×1600×6mm

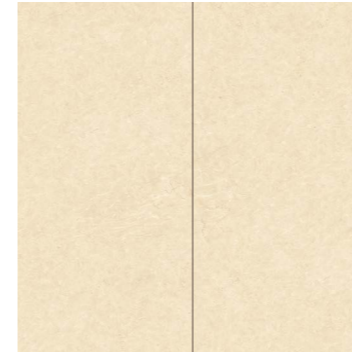


- 白砂糖莎安娜 / MIRAGE BEIGE
- MN144AP321606
- 结晶干粒亮抛 / Nanotech Polished + Glint
- 3200×1600×6mm

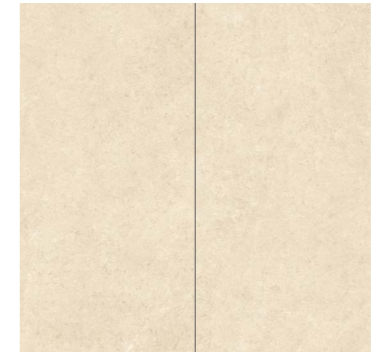
MARBLE
大理石系列

● Size:
3,200x1,600x6mm (126"x63" x1/4")

MORE NATURE
MORE POSSIBILITIES



- 西米 / CREMA MARFIL EXTRA
- MN119AFJ321606
- 钻粉干粒 + 数码微雕
Matt (Diamondglass) + Polishing Carving Ink
- 3200×1600×6mm



- 奥特曼 / TAJ MAHAL CLASSIC
- MN149AR321606
- 干粒柔抛 (真石光) / Silk
- 3200×1600×6mm



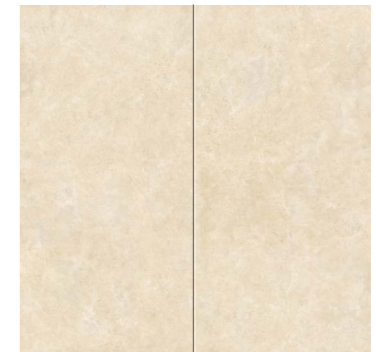
- 梵高灰 / VAN GOGH GREY
- MN262AR321606
- 干粒柔抛 (真石光) / Silk
- 3200×1600×6mm



- 古堡灰 / PLATINUM LEICA
- MN226AY321606 MN226AR321606
- 钻粉干粒 / Matt (Diamondglass)
干粒柔抛 (真石光) / Silk
- 3200×1600×6mm



- 白玉兰 / MAGNOLIASA EXTRA
- MN114AP321606
- 干粒亮抛 / Nanotech Polished/Shiny
- 3200×1600×6mm



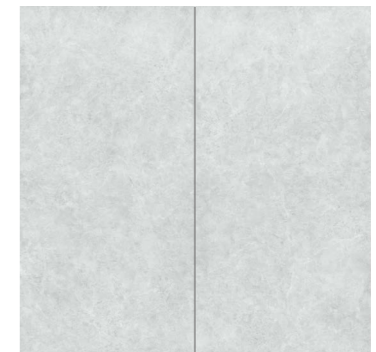
- 拿铁 / LATTE
- MN133AP321606
- 干粒亮抛 / Nanotech Polished/Shiny
- 3200×1600×6mm



- 玛莎拉蒂灰 / MASERATI GREY
- MN294BY321606 MN294BR321606
- 钻粉干粒 / Matt (Diamondglass)
干粒柔抛 (真石光) / Silk
- 3200×1600×6mm



- 雅柏白 / YABO WHITE
- MN787AR321606
- 干粒柔抛 (真石光) / Silk
- 3200×1600×6mm



- 拿铁灰 / LATTE ASH
- MN278AP321606
- 干粒亮抛 / Nanotech Polished/Shiny
- 3200×1600×6mm

MARBLE

大理石系列

● Size:
3,200x1,600x6mm (126"x63" x1/4")

MORE NATURE
MORE POSSIBILITIES



- 威尼斯棕 / FRAPPUCCINO
- MN328CP321606 MN328CY321606
- 干粒亮抛 / Nanotech Polished/Shiny
钻粉干粒 / Matt (Diamondglass)
- 3200×1600×6mm



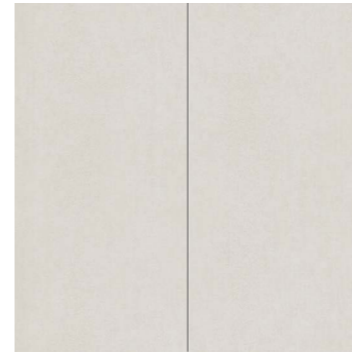
- 星耀黑 / GALAXY BLACK
- MN728CPG321606 MN728CY321606
- 结晶干粒亮抛 / Nanotech Polished + Glint
钻粉干粒 + 数码微雕 / Matt (Diamondglass) + Polishing Carving Ink
- 3200×1600×6mm

ESSENCE

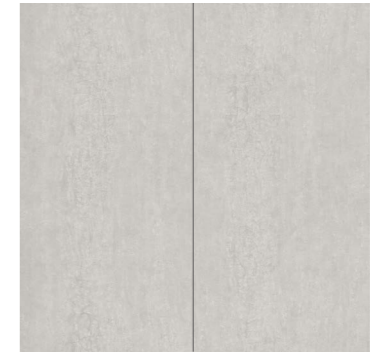
现代质感系列

● Size:
3,200x1,600x6mm (126"x63" x1/4")

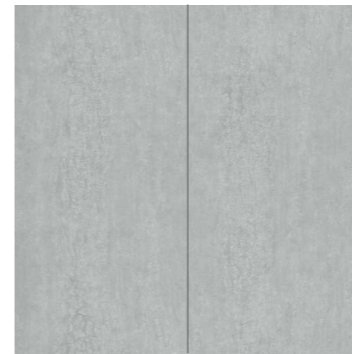
MORE NATURE
MORE POSSIBILITIES



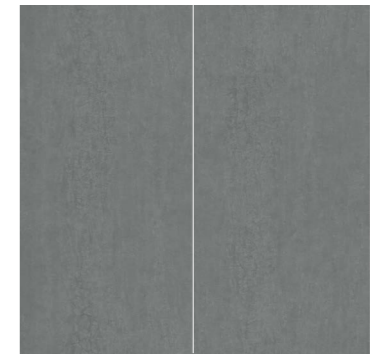
- 森蒂米灰 / SANDY GREY CREAM
- MN266AY321606
- 钻粉干粒 / Matt (Diamondglass)
- 3200×1600×6mm



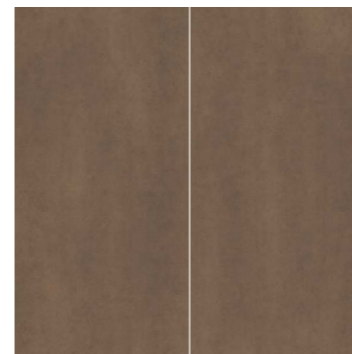
- 森蒂浅灰 / SANDY GREY LIGHT
- MN267AY321606
- 钻粉干粒 / Matt (Diamondglass)
- 3200×1600×6mm



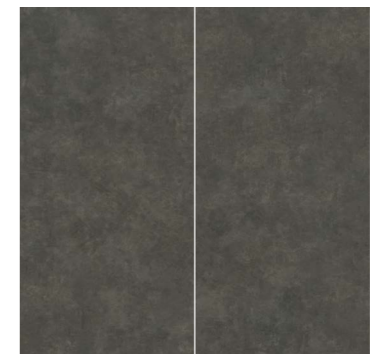
- 森蒂中灰 / SANDY GREY MED
- MN268AY321606
- 钻粉干粒 / Matt (Diamondglass)
- 3200×1600×6mm



- 森蒂深灰 / SANDY GREY DARK
- MN272AY321606
- 钻粉干粒 / Matt (Diamondglass)
- 3200×1600×6mm



- 红锈石 / CORTEN
- MN676CY321606
- 钻粉干粒 / Matt (Diamondglass)
- 3200×1600×6mm



- 黑锈石 / IRON COPPER
- MN762CY321606
- 钻粉干粒 + 数码微雕
Matt (Diamondglass) + Polishing Carving Ink
- 3200×1600×6mm

MONO SWATCH

纯色系列

● Size:
3,200x1,600x6mm (126"x63" x1/4")

MORE NATURE
MORE POSSIBILITIES



- 纯白 / PURE WHITE
- MN078AP321606 MN078AY321606
- 干粒亮抛 / Nanotech Polished/Shiny
钻粉干粒 / Matt (Diamondglass)
- 3200×1600×6mm



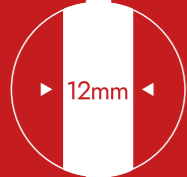
- 纯灰 / PURE GREY
- MN231BP321606 MN231BY321606
- 干粒亮抛 / Nanotech Polished/Shiny
钻粉干粒 / Matt (Diamondglass)
- 3200×1600×6mm



- 纯黑 / PURE BLACK
- MN772CP321606 MN772CY321606
- 干粒亮抛 / Nanotech Polished/Shiny
钻粉干粒 / Matt (Diamondglass)
- 3200×1600×6mm



1600×3200×12mm
(126"×63"×1/2")



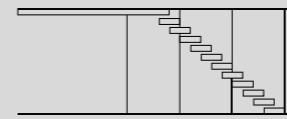
12mm



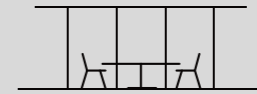
1700mm

SINTERED STONE SIZES

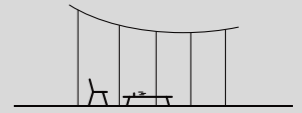
APPLICABLE SCENE



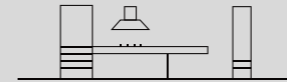
STAIRCASE 楼梯



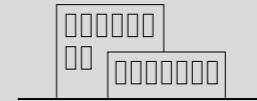
INTERIOR&DESIGN 室内装饰



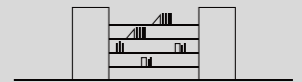
CURVED SURFACES 热弯



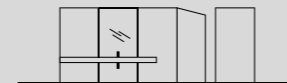
KITCHENE 厨房



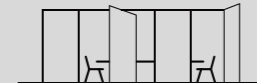
VENTILATED FACADE 通风立面



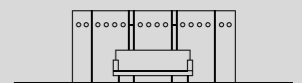
SHELVES CONSOLE 书架衣柜



TOPS&BATHROOMS 浴室



WALL&FLOOR 墙地



BACKLIGHT 背景墙

WHITE STONE

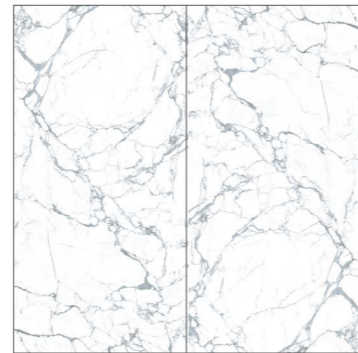
白石系列

● Size:
3,200x1,600x12mm (126"x63" x1/2")

MORE NATURE
MORE POSSIBILITIES



- 雅典白 / ATHENA WHITE(STATUARIO)
- MN001APT321612
- 数码通体胚 (真通体) 82 度白胚 (可透光)
- 4D Marble 82° Whiteness Full body (Transparent)
- 3200×1600×12mm



- 维纳斯白 / VENUS WHITE(STATUARIO)
- MN002APT321612
- 数码通体胚 (真通体) 82 度白胚 (可透光)
- 4D Marble 82° Whiteness Full body (Transparent)
- 3200×1600×12mm



- 比安卡白 / BIANCO STATUARIO
- MN003APT321612
- 数码通体胚 (真通体) 82 度白胚 (可透光)
- 4D Marble 82° Whiteness Full body (Transparent)
- 3200×1600×12mm



- 千禧金 / CALACATTA LINCOLN(CALACATTA GOLD)
- MN004APT321612
- 数码通体胚 (真通体) 82 度白胚 (可透光)
- 4D Marble 82° Whiteness Full body (Transparent)
- 3200×1600×12mm



- 雅顿金 / ARDEN GOLD
- MN039AP321612
- 干粒抛超白胚 72 度
- NANOTECH POLISHED/SHINY 70° WHITENESS
- 3200×1600×12mm



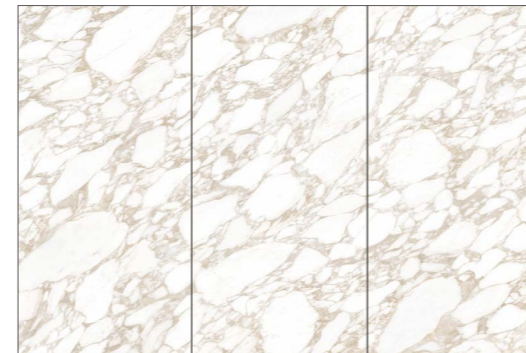
- 阿拉斯加 (鱼肚白) / ALASKA WHITE (CALACATTA)
- MN087AP321612
- 干粒亮抛 / Nanotech Polished/Shiny
- 3200×1600×12mm

WHITE STONE

白石系列

● Size:
3,200x1,600x12mm (126"x63" x1/2")

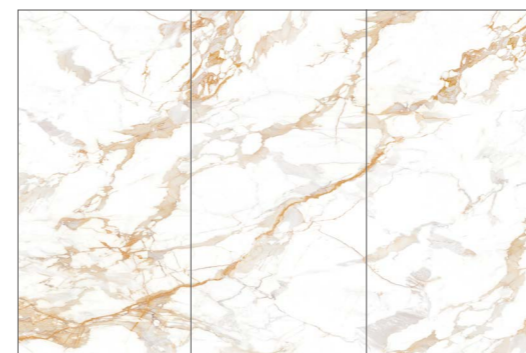
MORE NATURE
MORE POSSIBILITIES



- 卡地亚金 / CARTIER GOLD
- MN077AY321612
- 钻粉干粒 / Matt (Diamondglass)
- 3200×1600×12mm



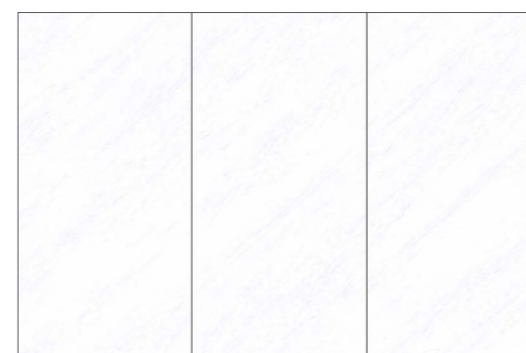
- 宝格丽白 / BULGARI WHITE
- MN076AY321612
- 钻粉干粒 / Matt (Diamondglass)
- 3200×1600×12mm



- 卡拉卡塔金 / CALACATTA GOLD
- MN034AY321612 MN034AR321612
- 钻粉干粒 / Matt (Diamondglass) 干粒柔抛 (真石光) / Silk
- 3200×1600×12mm



- 网纹雪花白 / STATUARIO WHITE
- MN019AY321612
- 钻粉干粒 / Matt (Diamondglass)
- 3200×1600×12mm



- 雅士白 / ARISTON WHITE
- MN062AY321612
- 钻粉干粒 / Matt (Diamondglass)
- 3200×1600×12mm



- 维纳斯 (鱼肚白) / VENUSWHITE (CALACATTA)
- MN086AP321612
- 干粒亮抛 / Nanotech Polished/Shiny
- 3200×1600×12mm

WHITE STONE

白石系列

● Size:
3,200x1,600x12mm (126"x63" x1/2")

MORE NATURE
MORE POSSIBILITIES



- 熊猫白 / PANDA WHITE
- MN072APG321612
- 结晶干粒亮抛 / Nanotech Polished + Glint
- 3200×1600×12mm



- 北极星 (雪花白) / POLARIS (STATUARIO)
- MN082AP321612 MN082AY321612
- 干粒亮抛 / Nanotech Polished/Shiny
- 钻粉干粒 / Matt (Diamondglass)
- 3200×1600×12mm

WHITE STONE

白石系列

● Size:
3,200x1,600x12mm (126"x63" x1/2")

MORE NATURE
MORE POSSIBILITIES



- 雅士金 / BIANCO BOLOMOTI ORIGINAL
- MN057AP321612
- 干粒亮抛 / Nanotech Polished/Shiny
- 3200×1600×12mm



- 巴尔多白 / BIANCO STATUARIO
- MN059AP321612
- 干粒亮抛 / Nanotech Polished/Shiny
- 3200×1600×12mm



- 挪威·雪花白 / CARRARA PREMIUM
- MN060AP321612
- 干粒亮抛 / Nanotech Polished/Shiny
- 3200×1600×12mm



- 伯爵金 / NUVOLO CALACATTA
- MN055AP321612
- 干粒抛超白胚 72度
- Nanotech Polished/Shiny 72° Whiteness
- 3200×1600×12mm



- 世纪金 (鱼肚金) / CALACATTA GOLD
- MN035AP321612
- 干粒抛超白胚 72度
- Nanotech Polished/Shiny 72° Whiteness
- 3200×1600×12mm



- 安第斯山白 / BIANCO VENATO EXTRA
- MNBH018321612
- 数码通体胚 (真通体) 82度白胚 (可透光)
- 4D Marble 82° Whiteness Full body (Transparent)
- 3200×1600×12mm



- 普罗旺斯白 / STATUARIO DIAMANTE
- MN063AP321612
- 干粒亮抛 / Nanotech Polished/Shiny
- 3200×1600×12mm



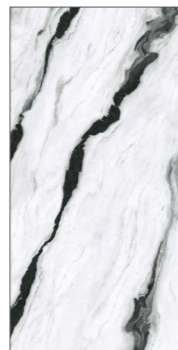
- 鱼肚金 / CALACATTA ROMA
- MN065AP321612
- 干粒亮抛 / Nanotech Polished/Shiny
- 3200×1600×12mm



- 托尔白 / CALACATTA TOP
- MN069AP321612
- 干粒亮抛 / Nanotech Polished/Shiny
- 3200×1600×12mm



- 雪花白 / STATUARIO WHITE
- MN051AP321612
- 干粒抛超白胚 72度
- Nanotech Polished/Shiny 72° Whiteness
- 3200×1600×12mm



- 熊猫白 / PANDA WHITE
- MN072APT321612
- 干粒抛数码通体
- 4D Marble 72° Whiteness
- 3200×1600×12mm



- 爵士金 / CALACATTA POLIDO
- MN053AP321612 MN053AFC321612
- 干粒抛超白胚 72度
- Nanotech Polished/Shiny 72° Whiteness
- 平光釉 + 亮光精雕
- Matt (Natural Finish + Polishing Carving Ink)
- 3200×1600×12mm



- 爵士金 / CALACATTA POLIDO
- MN075AP321612 MN075AFJ321612
- 干粒抛超白胚 72度
- Nanotech Polished/Shiny 72° Whiteness
- 平光釉 + 亮光精雕
- Matt (Natural Finish + Polishing Carving Ink)
- 3200×1600×12mm

LUXURY STONE

奢石系列

● Size:
3,200x1,600x12mm (126"x63" x1/2")



- 鱼肚灰 / SUPER WHITE
- MN259ART321612
- 干粒柔抛 (真石光) + 色胚
Silk + Colored Body
- 3200×1600×12mm



- 阿姬曼 / TAJ MAHAL
- MN178AP321612 MN178AR321612
- 干粒亮抛 + 色胚
Nanotech Polished/Shiny + Colored Body
- 干粒柔抛 (真石光) + 色胚 + 数码微雕
Silk + Colored Body + Carving Ink
- 3200×1600×12mm

MORE NATURE
MORE POSSIBILITIES

MARBLE

大理石系列

● Size:
3,200x1,600x12mm (126"x63" x1/2")



- 玛莎拉蒂灰 / MASERATI GREY
- MN294BY321612
- 钻粉干粒 + 数码微雕 + 色胚
Matt (Diamondglass) + Carving Ink + Colored Body
- 3200×1600×12mm

MORE NATURE
MORE POSSIBILITIES



- 古堡灰 / PLATINUM LEICA
- MN226AY321612
- 钻粉干粒 + 色胚
Matt (Diamondglass) + Colored Body
- 3200×1600×12mm

ONYX

玉石系列

● Size:
3,200x1,600x12mm (126"x63" x1/2")



- 金线白玉 / SNOW WHITE
- MN044AP321612
- 干粒亮抛 + 色胚
Nanotech Polished/Shiny + Colored Body
- 3200×1600×12mm

MORE NATURE
MORE POSSIBILITIES



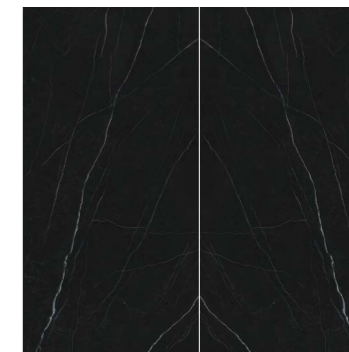
- 雅柏白 / YABO WHITE
- MN787AY321612
- 钻粉干粒 + 超白胚
Matt(Diamondglass)+ 62°Whiteness
- 3200×1600×12mm



- 星耀黑 / GALAXY BLACK
- MN728CPG321612 MN728CY321612
- 结晶干粒亮抛 + 色胚
Nanotech Polished + Glint + Colored Body
- 钻粉干粒 + 数码微雕 + 色胚
Matt (Diamondglass) + Carving Ink + Colored Body
- 3200×1600×12mm



- 威尼斯棕 / FRAPPUCCINO
- MN328CP321612
- 干粒亮抛 + 色胚
Nanotech Polished/Shiny + Colored Body
- 3200×1600×12mm



- 蒂凡尼黑 / NERO MARGIUA
- MN741CY321612 MN741CP321612
- 钻粉干粒 + 色胚
Matt (Diamondglass) + Colored Body
- 干粒亮抛 + 色胚
Nanotech Polished/Shiny + Colored Body
- 3200×1600×12mm

MARBLE

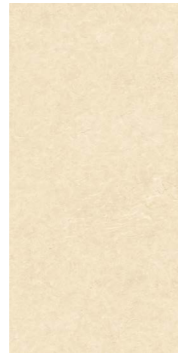
大理石系列

● Size:
3,200x1,600x12mm (126"x63" x1/2")

MORE NATURE
MORE POSSIBILITIES



- 罗马洞石 / ROMAN TRAVERTINE
- MN141BFJ321612
- 肌纹釉 + 数码微雕 + 色胚
Matt (Ultrasoft finished) + Carving Ink + Colored Body
- 3200×1600×12mm



- 西米 / CREMA MARFIL EXTRA
- MN119AFJ321612
- 肌纹釉 + 数码微雕 + 色胚
Matt (Ultrasoft finished) + Carving Ink + Colored Body
- 3200×1600×12mm



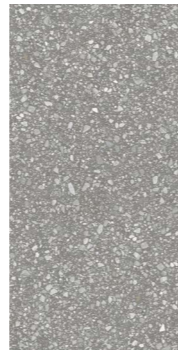
- 梵高灰 / VAN GOGH GREY
- MN260ART321612
- 干粒柔抛 (真石光) + 色胚
Silk + Colored Body
- 3200×1600×12mm



- 圣安娜 / TRIESTE CREAM
- MN182AFJ321612
- 肌纹釉 + 数码微雕 + 色胚
Matt (Ultrasoft finished) + Carving Ink + Colored Body
- 3200×1600×12mm



- 阿玛尔菲 / BELLISSIMO MARBLE
- MN186AFJ321612
- 肌纹釉 + 数码微雕 + 色胚
Matt (Ultrasoft finished) + Carving Ink + Colored Body
- 3200×1600×12mm



- 水磨年华 / TERRAZZO ZOPPO
- MN254BY321612
- 钻粉干粒 + 模具 + 色胚
Matt (Diamondglass) + Moulding + Colored Body
- 3200×1600×12mm



- 塞纳午夜 / STARRY SEINE
- MN751CP321612
- 干粒亮抛 + 色胚
Nanotech Polished/Shiny + Colored Body
- 3200×1600×12mm



- 卡塔黑 / CALACATTA BLACK
- MN744CY321612
- 钻粉干粒 + 模具 + 色胚
Matt (Diamondglass) + Moulding + Colored Body
- 3200×1600×12mm



- 翰墨白金 / TITANIUM ORIGINAL
- MN750CPG321612
- 结晶干粒亮抛 + 色胚
Nanotech Polished + Glint + Colored Body
- 3200×1600×12mm

MARBLE

大理石系列

● Size:
3,200x1,600x12mm (126"x63" x1/2")

MORE NATURE
MORE POSSIBILITIES



- 范思哲金 / GOLD DAMASCATO
- MN754CY321612 MN754CPG321612
- 钻粉干粒 + 色胚
Matt (Diamondglass) + Colored Body
- 结晶干粒亮抛 + 色胚
Nanotech Polished + Glint + Colored Body
- 3200×1600×12mm



- 范思哲金 / GOLD DAMASCATO
- MN739CY321612 MN739CPG321612
- 钻粉干粒 + 色胚
Matt (Diamondglass) + Colored Body
- 结晶干粒亮抛 + 色胚
Nanotech Polished + Glint + Colored Body
- 3200×1600×12mm



- 露西娅啡金 / PREMIUM PUPILS
- MN338BP321612 MN338BY321612
- 干粒亮抛 + 色胚
Nanotech Polished/Shiny + Colored Body
- 钻粉干粒 + 色胚
Matt (Diamondglass) + Colored Body
- 3200×1600×12mm



- 阿玛尼灰 / ARMANI GREY
- MN270BP321612 MN270BY321612
- 干粒亮抛 + 色胚
Nanotech Polished/Shiny + Colored Body
- 钻粉干粒 + 色胚
Matt (Diamondglass) + Colored Body
- 3200×1600×12mm



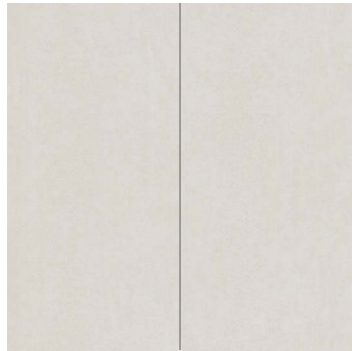
- 维罗纳之夜 / MINOTAURE BLACK
- MN749CP321612
- 干粒亮抛 + 色胚
Nanotech Polished/Shiny + Colored Body
- 3200×1600×12mm

ESSENCE

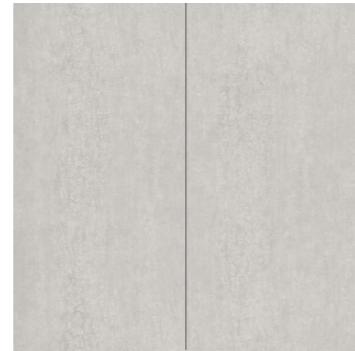
现代质感系列

● Size:
3,200x1,600x12mm (126"x63" x1/2")

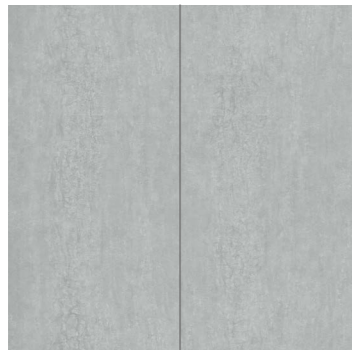
MORE NATURE
MORE POSSIBILITIES



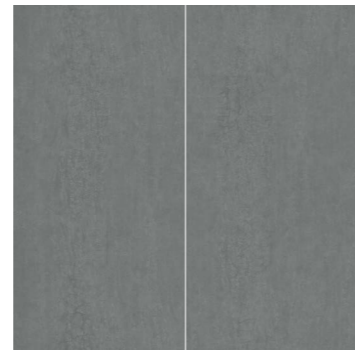
- 森蒂米灰 / SANDY GREY CREAM
- MN266AY321612
- 钻粉干粒 + 色胚
Matt (Diamondglass) + color body
- 3200×1600×12mm



- 森蒂浅灰 / SANDY GREY LIGHT
- MN267AY321612
- 钻粉干粒 + 色胚
Matt (Diamondglass) + color body
- 3200×1600×12mm



- 森蒂中灰 / SANDY GREY MED
- MN268AY321612
- 钻粉干粒 + 色胚
Matt (Diamondglass) + color body
- 3200×1600×12mm



- 森蒂深灰 / SANDY GREY DARK
- MN272AY321612
- 钻粉干粒 + 色胚
Matt (Diamondglass) + color body
- 3200×1600×12mm



- 黑锈石 / IRON COPPER
- MN762CY321612
- 钻粉干粒 + 数码微雕 + 色胚
Matt (Diamondglass) + Polishing Carving Ink + color body
- 3200×1600×12mm

MONO SWATCH

纯色系列

● Size:
3,200x1,600x12mm (126"x63" x1/2")

MORE NATURE
MORE POSSIBILITIES



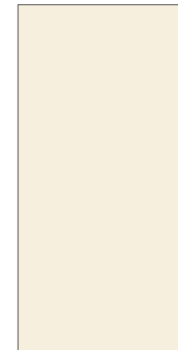
- 纯白 / PURE WHITE
- MN078AY321612 MN078AP321612
- 钻粉干粒 + 色胚
Matt (Diamondglass) + Color Body
干粒亮抛 / Nanotech Polished/Shiny
- 3200×1600×12mm



- 纯灰 / PURE GREY
- MN231BP321612 MN231BY321612
- 钻粉干粒 + 色胚
Matt (Diamondglass) + Color Body
干粒亮抛 / Nanotech Polished/Shiny
- 3200×1600×12mm



- 纯黑 / PURE BLACK
- MN772CP321612 MN772CY321612
- 钻粉干粒 + 色胚
Matt (Diamondglass) + Color Body
干粒亮抛 / Nanotech Polished/Shiny
- 3200×1600×12mm



- 奶油色 / BLANCO
- MNXN32153
- 细腻面 + 色胚
Smooth + Colored Body
- 3200×1600×12mm



- 卡其浅灰 / CAMEL
- MNXN32035
- 细腻面 + 色胚
Smooth + Colored Body
- 3200×1600×12mm



- 卡其棕 / CASTAGNA
- MNXN32039
- 细腻面 + 色胚
Smooth + Colored Body
- 3200×1600×12mm



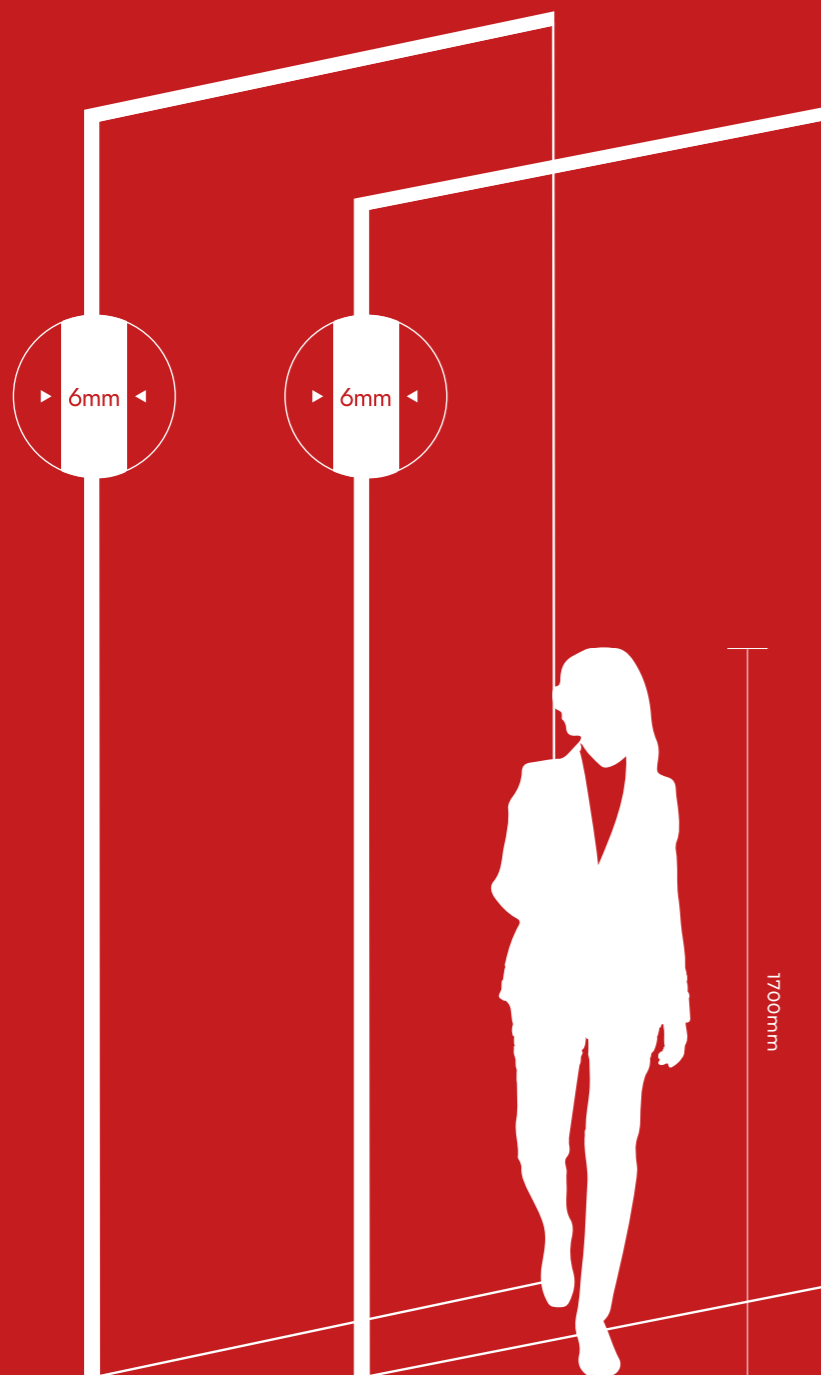
- 珊瑚红 / AMARANTO
- MNXN32037
- 细腻面 + 色胚
Smooth + Colored Body
- 3200×1600×12mm



- 森林绿 / MUSCHIO
- MNXN32050
- 细腻面 + 色胚
Smooth + Colored Body
- 3200×1600×12mm

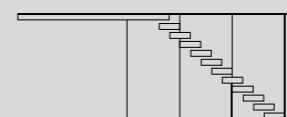
1200×3000×6mm
(118"×48" ×1/4")

2,800×1,200×6mm
(110"×48" ×1/4")



SINTERED STONE SIZES

APPLICABLE SCENE



STAIRCASE 楼梯



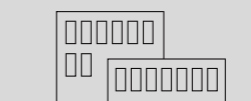
INTERIOR&DESIGN 室内装饰



CURVED SURFACES 热弯



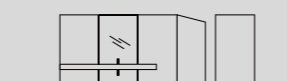
KITCHENE 厨房



VENTILATED FACADE 通风立面



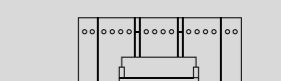
SHELVES CONSOLE 书架衣柜



TOPS&BATHROOMS 浴室



WALL&FLOOR 墙地



BACKLIGHT 背景墙

POLIFORM WOOD

宝利丰木纹系列

● Size:
3,000x1,200x6mm (118"x48" x1/4")

MORE NATURE
MORE POSSIBILITIES



• 宝利丰·白杨木 / ROYAL POPLAR
• MN115AY301206
• 2代数码立体复刻 + 数码微雕
Matt (2.0 Full digital+Microtech)
• 3000×1200×6mm



• 宝利丰·栓木 / CORK EXTRA
• MN116AY301206
• 2代数码立体复刻 + 数码微雕
Matt (2.0 Full digital+Microtech)
• 3000×1200×6mm



• 宝利丰·白橡 / CLASSICO OAK
• MN117AY301206
• 2代数码立体复刻 + 数码微雕
Matt (2.0 Full digital+Microtech)
• 3000×1200×6mm



• 宝利丰·影木 / CENTURY SYCOMORE
• MN258AY301206
• 天鹅绒 / Soft (Velvet)
• 3000×1200×6mm



• 宝利丰·尤加利 / EUCALYPTUS
• MN312BY301206
• 2代数码立体复刻 + 数码微雕
Matt (2.0 Full digital+Microtech)
• 3000×1200×6mm



• 宝利丰·烟熏橡木 / SMOKY OAK
• MN615CY301206
• 2代数码立体复刻 + 数码微雕
Matt (2.0 Full digital+Microtech)
• 3000×1200×6mm

MARBLE

大理石系列

● Size:
2,800x1,200x6mm (110"x48" x1/4")

MORE NATURE
MORE POSSIBILITIES



• 丝绸雅柏白 / NIMBUS WHITE
• MN145AY281206
• 天鹅绒微雕 / Soft (Velvet Carving)
• 2800×1200×6mm



• 元气森林 / WILD FOREST
• MN327AY281206
• 真石釉 + 数码微雕
Matt (Natural Glazed+Microtech)
• 2800×1200×6mm



• 童话森林 / SUPER WHITE EXTRA
• MN257AY281206
• 真石釉 + 数码微雕
Matt (Natural Glazed+Microtech)
• 2800×1200×6mm

ULTIMATE TRAVERTINE

非凡洞石系列

● Size:
2,800x1,200x6mm (110"x48" x1/4")

MORE NATURE
MORE POSSIBILITIES



- 千层洞 / TRAVERTINE SILVER
- MN129AY281206
- 意大利模具 + 钻粉干粒 + 数码微雕
Matt (Diamondglass + Digital Microtech)
- 2800×1200×6mm



- 月牙米白洞 / TRVERTINE BOTTICINO
- MN138AY281206
- 多重叠加数码立体复刻 + 数码微雕
Matt (Dimensional Microtech)
- 2800×1200×6mm



- 罗马白洞 / TRAVERTINO NAVONA
- MN139AY281206
- 多重叠加数码立体复刻 + 数码微雕
Matt (Dimensional Microtech)
- 2800×1200×6mm



- 月牙灰洞 / TRVERTINE CLASSICO
- MN225AY281206
- 多重叠加数码立体复刻 + 数码微雕
Matt (Dimensional Microtech)
- 2800×1200×6mm

ULTIMATE LIMESTONE

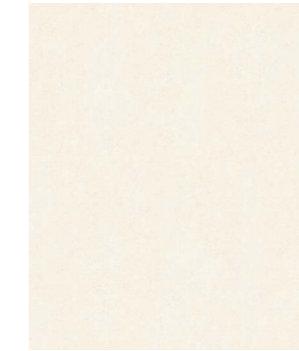
非凡莱姆石系列

● Size:
2,800x1,200x6mm (110"x48" x1/4")

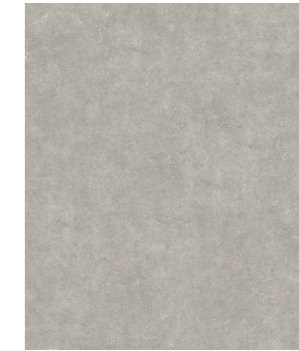
MORE NATURE
MORE POSSIBILITIES



- 白沙莱姆 / FATIMA BONE
- MN125AY281206
- 多重叠加数码立体复刻 / Matt (Full Digital)
- 2800×1200×6mm



- 贝金莱姆 / CORAL BEACH
- MN134AY281206
- 多重叠加数码立体复刻 / Matt (Full Digital)
- 2800×1200×6mm



- 深海莱姆灰 / HANNOVER TOPO
- MN315BY281206
- 多重叠加数码立体复刻 / Matt (Full Digital)
- 2800×1200×6mm



- 潘多拉莱姆 / DEEP GREY NATURE
- MN316BY281206
- 多重叠加数码立体复刻 / Matt (Full Digital)
- 2800×1200×6mm

RETRO JAZZ 古爵士系列

● Size:
2,800x1,200x6mm (110"x48" x1/4")



- 古爵士浅灰 / CEPRO DI GRE GREY
- MN248AY281206
- 多重叠加数码立体复刻 / Matt (Full Digital)
- 2800x1200x6mm



- 古爵士中灰 / CEPRO DI GRE ANTHRACITE
- MN251AY281206
- 多重叠加数码立体复刻 / Matt (Full Digital)
- 2800x1200x6mm

MORE NATURE
MORE POSSIBILITIES

VOLCANIC 火山岩系列

● Size:
2,800x1,200x6mm (110"x48" x1/4")



- 缪斯 / MADAGASCAR BLANCO
- MN123AY281206
- 火山珍珠 + 数码微雕
Matt (Rock Texture + Microtech)
- 2800x1200x6mm



- 阿拉美 / MORSE ROUGE NATURE
- MN143AY281206
- 意大利模具 + 钻粉干粒 + 数码微雕
Matt (Diamondglass + Digital Microtech)
- 2800x1200x6mm

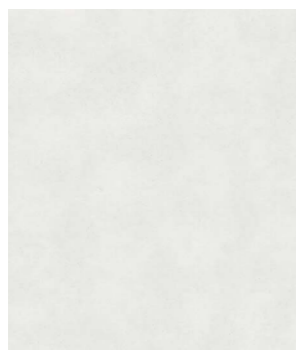


- 安哥拉 / TERRA DESERT
- MN213AY281206
- 意大利模具 + 钻粉干粒 + 数码微雕
Matt (Diamondglass + Digital Microtech)
- 2800x1200x6mm

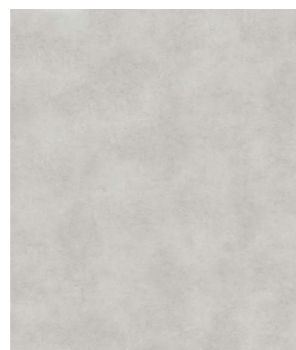
MORE NATURE
MORE POSSIBILITIES

CLEVELAND 克利夫兰系列

● Size:
2,800x1,200x6mm (110"x48" x1/4")



- 克利夫兰·浅灰 / TECNICA WHITE
- MN216AY281206
- 火山珍珠 + 数码微雕
Matt (Rock Texture + Microtech)
- 2800x1200x6mm



- 克利夫兰·深灰 / TECNICA GREY
- MN255AY281206
- 火山珍珠 + 数码微雕
Matt (Rock Texture + Microtech)
- 2800x1200x6mm

MORE NATURE
MORE POSSIBILITIES



- 秘境城堡 / LOFT ASH
- MN229AY281206
- 火山珍珠 + 数码微雕
Matt (Rock Texture + Microtech)
- 2800x1200x6mm



- 智利灰 / PIETRA DI LUNA
- MN253AY281206
- 火山珍珠 + 数码微雕
Matt (Rock Texture + Microtech)
- 2800x1200x6mm



- 麦迪逊 / CODE TAUPE
- MN323BY281206
- 意大利模具 + 钻粉干粒 + 数码微雕
Matt (Diamondglass + Digital Microtech)
- 2800x1200x6mm



- 马岩岩 / BASALTINA ANTHRACITE
- MN326CY281206
- 钻粉干粒 / Matt (Diamondglass)
- 2800x1200x6mm

SASSUOLO

萨索洛系列

● Size:
2,800x1,200x6mm (110"x48" x1/4")

MORE NATURE
MORE POSSIBILITIES



- 萨索洛·浅灰 / SASSUOLO GREY
- MN224AY281206
- 多重叠加数码立体复刻 + 数码微雕
Matt (Dimensional Microtech)
- 2800×1200×6mm



- 萨索洛·中灰 / SASSUOLO SAND
- MN215AY281206
- 多重叠加数码立体复刻 + 数码微雕
Matt (Dimensional Microtech)
- 2800×1200×6mm



- 萨索洛·深灰 / SASSUOLO ASH
- MN325CY281206
- 多重叠加数码立体复刻 + 数码微雕
Matt (Dimensional Microtech)
- 2800×1200×6mm

COATING

涂影系列

● Size:
2,800x1,200x6mm (110"x48" x1/4")

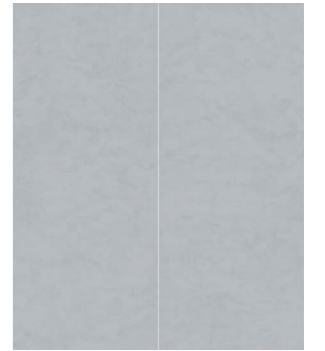
MORE NATURE
MORE POSSIBILITIES



- 摩登米白 / MORSE WHITE NATURE
- MN121AY281206
- 意大利模具 + 钻粉干粒 + 数码微雕
Matt (Diamondglass + Digital Microtech)
- 2800×1200×6mm



- 休斯顿·浅灰 / CONCEPT MIST
- MN212AY281206
- 意大利模具 + 钻粉干粒 + 数码微雕
Matt (Diamondglass + Digital Microtech)
- 2800×1200×6mm



- 贝加尔浅灰 / CONCEPT SMOKE
- MN242AY281206
- 意大利模具 + 钻粉干粒 + 数码微雕
Matt (Diamondglass + Digital Microtech)
- 2800×1200×6mm



- 威尔斯灰 / MORSE GREY NATURE
- MN247AY281206
- 意大利模具 + 钻粉干粒 + 数码微雕
Matt (Diamondglass + Digital Microtech)
- 2800×1200×6mm



- 拉维罗 / CEMENT BRONZE
- MN321BY281206
- 意大利模具 + 钻粉干粒 + 数码微雕
Matt (Diamondglass + Digital Microtech)
- 2800×1200×6mm

RETROSTONE

星月石系列

● Size:
2,800x1,200x6mm (110"x48" x1/4")

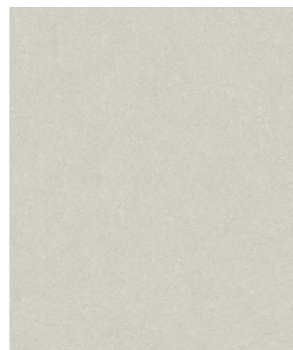
MORE NATURE
MORE POSSIBILITIES



- 星月米白 / SEMINATO CREAM
- MN124AY281206
- 钻粉干粒 / Matt (Diamondglass)
- 2800×1200×6mm



- 星月米灰 / SEMINATO BEIGE
- MN219AY281206
- 钻粉干粒 / Matt (Diamondglass)
- 2800×1200×6mm



- 星月浅灰 / SEMINATO ASH
- MN221AY281206
- 钻粉干粒 / Matt (Diamondglass)
- 2800×1200×6mm

MICROCEMENT

微水泥系列

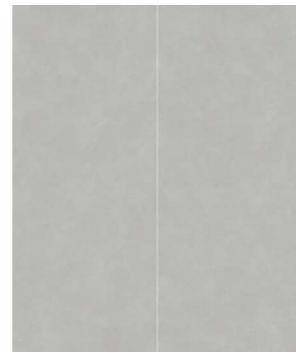
● Size:
2,800x1,200x6mm (110"x48" x1/4")



• 耶路撒冷·米灰 / AVENUE BEIGE NATURE
• MN127AY281206
• 钻粉干粒 / Matt (Diamondglass)
• 2800×1200×6mm



• 皓月影灰 / GREY EARTH
• MN243AY281206
• 意大利模具 + 钻粉干粒 + 数码微雕
Matt (Diamondglass + Digital Microtech)
• 2800×1200×6mm



• 晨烟 / SAND EARTH
• MN246AY281206
• 意大利模具 + 钻粉干粒 + 数码微雕
Matt (Diamondglass + Digital Microtech)
• 2800×1200×6mm



• 岁月童话 / MORSE COAL NATURE
• MN322CY281206
• 意大利模具 + 钻粉干粒 + 数码微雕
Matt (Diamondglass + Digital Microtech)
• 2800×1200×6mm

MORE NATURE
MORE POSSIBILITIES

PEARLITE FABRIC

珍珠布纹系列

● Size:
2,800x1,200x6mm (110"x48" x1/4")



• 伊莱克斯 / TEXTIL CREAM
• MN136AY281206
• 钻粉干粒 + 数码微雕
Matt (Diamondglass + Microtech)
• 2800×1200×6mm



• 爱丽丝 / VALAN GES
• MN137AY281206
• 钻粉干粒 + 数码微雕
Matt (Diamondglass + Microtech)
• 2800×1200×6mm

MORE NATURE
MORE POSSIBILITIES

ITALIAN ART IMPRESSIONISM

意大利艺术印象派系列

● Size:
2,800x1,200x6mm (110"x48" x1/4")

MORE NATURE
MORE POSSIBILITIES



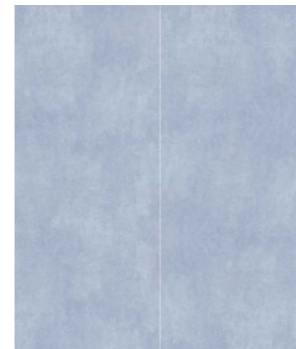
- 乌苏里 / VELA NATURAL
- MN118AY281206
- 意大利模具 + 钻粉干粒 + 数码微雕
Matt (Diamondglass + Digital Microtech)
- 2800×1200×6mm



- 慕悦 / PIETRA DI AVORIO
- MN132AY281206
- 意大利模具 + 钻粉干粒 + 数码微雕
Matt (Diamondglass + Digital Microtech)
- 2800×1200×6mm



- 休斯顿·米白 / NEWPORT BEIGE NATURE
- MN135AY281206
- 意大利模具 + 钻粉干粒 + 数码微雕
Matt (Diamondglass + Digital Microtech)
- 2800×1200×6mm

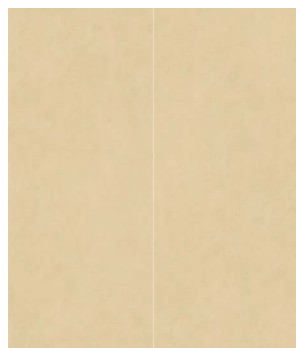


- 普鲁士蓝 / TUSCANY SEA
- MN415BY281206
- 意大利模具 + 钻粉干粒 + 数码微雕
Matt (Diamondglass + Digital Microtech)
- 2800×1200×6mm



- 托斯卡纳·枫 / MAPLE COLONIA
- MN616CY281206
- 意大利模具 + 钻粉干粒 + 数码微雕
Matt (Diamondglass + Digital Microtech)
- 2800×1200×6mm

MORE NATURE
MORE POSSIBILITIES



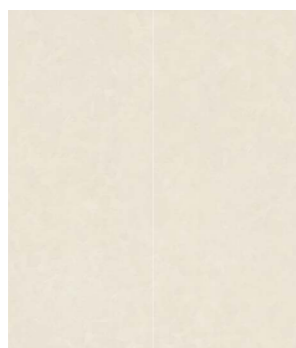
- 克林索尔 / COTTO CANAMO
- MN142AY281206
- 意大利模具 + 钻粉干粒 + 数码微雕
Matt (Diamondglass + Digital Microtech)
- 2800×1200×6mm



- 云雾 / CEMENT DESERT
- MN214AY281206
- 意大利模具 + 钻粉干粒 + 数码微雕
Matt (Diamondglass + Digital Microtech)
- 2800×1200×6mm



- 朴纸清灰 / CALA SAND
- MN217AY281206
- 意大利模具 + 钻粉干粒 + 数码微雕
Matt (Diamondglass + Digital Microtech)
- 2800×1200×6mm



- 蒙特利尔·米灰 / TERRA CASHMERE
- MN223AY281206
- 意大利模具 + 钻粉干粒 + 数码微雕
Matt (Diamondglass + Digital Microtech)
- 2800×1200×6mm



- 普罗米修斯 / LIGHT EARTH
- MN245AY281206
- 意大利模具 + 钻粉干粒 + 数码微雕
Matt (Diamondglass + Digital Microtech)
- 2800×1200×6mm



- 蒙特利尔·蓝 / TERRA SEA
- MN412BY281206
- 意大利模具 + 钻粉干粒 + 数码微雕
Matt (Diamondglass + Digital Microtech)
- 2800×1200×6mm